

# 2025 Greenest Fastest Mile

## Green Living Expo

## Bob Seaman's Dream Mile

**GENERAL EVENT INFORMATION 1004 W**

**C Street, Wilmington, CA 90744**

**310-732-3508**

**Register at [www.GreenestFastestMileRun.Com](http://www.GreenestFastestMileRun.Com)**

- Registration will continue to be available on line through Thursday, July 3 at 11:59pm PT
- Registration will be available on site at packet pick up on Friday, July 4, between 6:30A-8:45 A.M.  
REMEMBER TO ARRIVE WITH PLENTY OF TIME TO PICK UP YOUR PACKET OR REGISTER.
- Registration will remain open until 10 minutes prior to the start of each Mile Race
- Exhibitor / Vendor Set-Up Starts at 6:00 A.M. and ends 10 minutes prior to the start of the race.

### CANCELLATION POLICY

The sale and/or transfer of race entries/bib numbers is strictly prohibited. All registration fees and ancillary purchases are nonrefundable. Participants may be required to show a government-issued photo ID upon picking up their bib. You have the option to purchase insurance in case you are unable to make it and want a refund. Insurance is available for purchase in the event you are unable to participate at the event.

### SCHEDULE

Thursday, July 3,	4PM - 6:30 PM	Packet Pick-up (Includes t-shirt)	Wilmington Chamber of Commerce 544 N. Avalon Blvd, LA CA 90744

Friday July 4th	6:30 A.M.	On-Site registration and Packet pick-up (Closes 10 Minutes prior to start of each Mile Race)	At Waterfront Park in the main expo area. 1004 West C Street, Wilmington CA 90744.
Friday July 4th	9:00 A.M.	Kids Miles Begin)	
	7:00 A.M. - 2:00 P.M.	Green Living Expo	1004 West C Street, Wilmington CA 90744
	12:30 P.M.	Bob Seaman's Dream Mile Elite Invitational	

## COURSE MAPS

Free public parking available around the waterfront park and west of the event area.

## **SAME DAY REGISTRATION DETAILS | 6:30 A.M.**

- **Not responsible for lost or stolen items**
- **Do not switch your bib with another person**

### **FINISHER MEDALS & T-SHIRTS**

Finisher medals will only be provided to those who cross the finish line and are registered for the race. T-shirts will be provided during packet pick up. Same day registration will get a shirt after the race starts as they are guaranteed to pre-registered participants only.

### **BIB-ASSIGNMENT**

Bib numbers will not be pre-assigned. Participants bibs will be assigned at packet pick-up using dynamic bib assignment. Volunteers will check-in runners and assign their bib numbers them.

### **PARKING**

Free public parking on around the waterfront park.

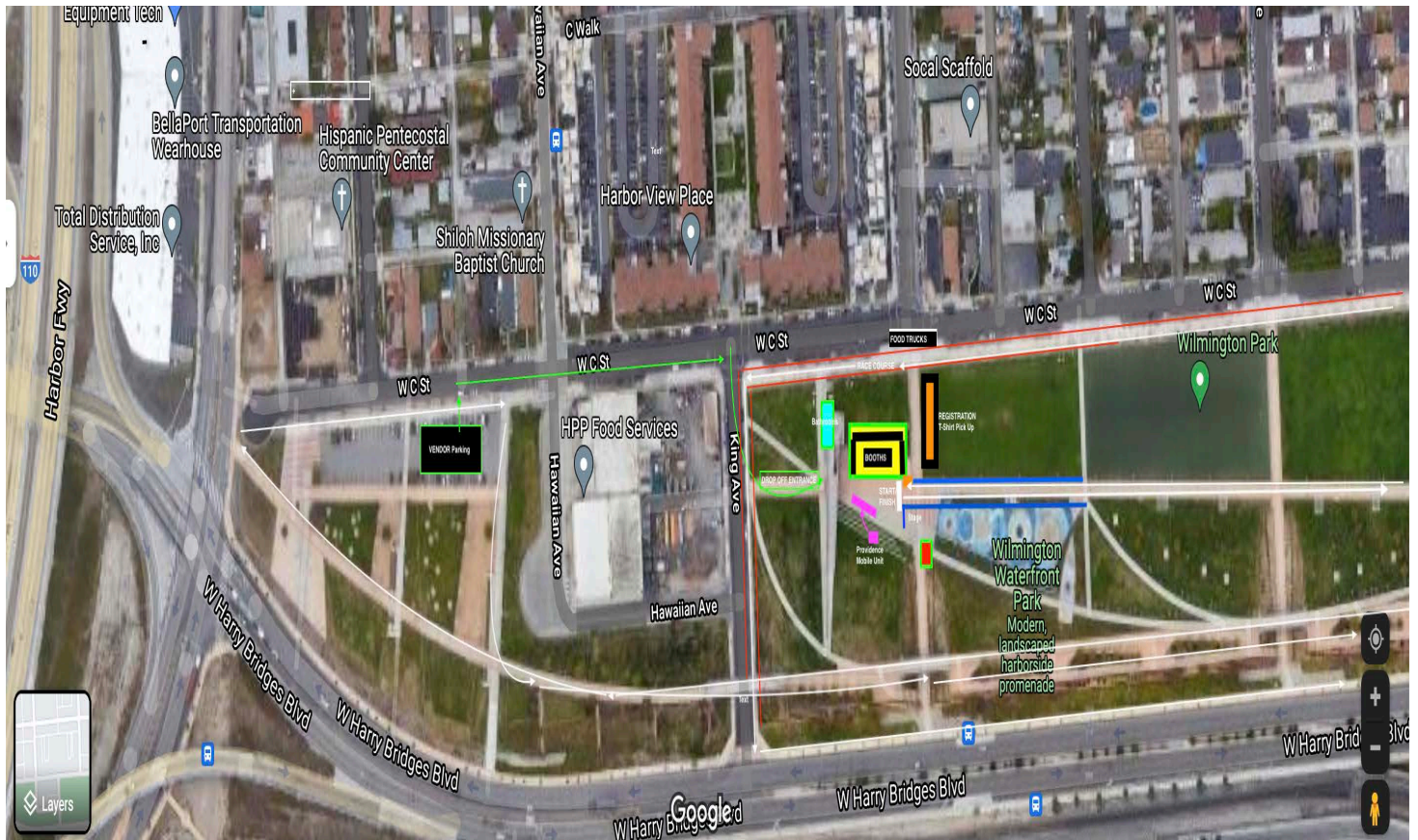
No matter where you park, allow plenty of time to get to the start.

**Do not leave any valuables visible in your car**

## VIP VENDOR | EXHIBITORS | SPONSORS PARKING

You will be allowed to temporarily park your car to unload between 6A- 7:30A in the expo area. Entrance from King Street or Wilmington Avenue.

## GATES OPEN AT 6:30 AM FOR SET UP



#### **FIRST AID SUPPORT**

We will have a roving First Aid staff on the route and in the registration area in the First Aid Booth.

#### **ELITE RUNNER PARTICIPATION & AWARDS**

Please review the Elite runner participation section on the website. Elite athletes have to be pre-approved by the event director, Jose Luis Zavala, through the Elite Race Coordinator. Award money will be mailed to all confirmed athletes once completed W-9 forms are provided.

## **FINISH LINE FESTIVAL**

The Finish Line Festival is open to all participants and spectators. Come join the party! Participants will be able to pick up post-race food and their finisher medallion. Feature live music, activities & other entertainment.

## **GREEN LIVING EXPO**

**START TIMES    (Subject to Change Based on Total Number of Registrations)**

- **Kids Half Mile | starts at 9:00 A.M.**
- **9- 12 Youth | Male 9:10 A.M. Female 9:25 A.M.**
- 
- **13- 14 | Male 9:45 | Female 10:00 A.M.**
- 
- **15- 16 | Male 10:15 A.M. Female 10:30 A.M.**
- **17- 18 | Male 10:45 A.M. Female 11:00 A.M.**
- **People's Greenest Fastest Mile | Male 11:15 A.M. Female 11:30 A.M.**
- **Masters | Male 11:45 A.M. Female 12:00 P.M.**
- **Bob Seaman's Dream Mile Elite | 12:30 P.M.**
- **Bob Seaman's Drea, Mile Elite Female | 12:45 P.M.**

•

### Cover The Distance, Support The Cause

Proceeds benefiting Wilmington Chamber of Commerce. For more information on the various programs and agencies they support visit their website [www.Wilmington-Chamber.com](http://www.Wilmington-Chamber.com), 310-834-8586

### About Aztlan Athletics | Sustainable Special Events & Race Management

Join Aztlan Athletics in their mission-driven events throughout the year. By completing most of Aztlan events you will discover the agencies supported throughout the year. These organizations are worthy of support. For more information on how you can leave a legacy in your community by creating a sustainable fundraising event contact us at [Info@AztlanEvents.com](mailto:Info@AztlanEvents.com)

### Aztlan Athletics History

Since 1976 Aztlan has been developing community-based, mission-driven, sustainable run/walk wellness properties in Southern California. All if not most of the staff and service contractors reside in the region and have been contributing to it's success. Aztlan is honored to be partnering with over 35 recognized non-profit organizations.

### PARTNERS

#### Operating Partner

Aztlan Athletics LLC

### SPONSORS

## SOCIAL MEDIA

### INSTAGRAM

@AztlanAthletics  
@Wilmington-Chamber

### FACEBOOK

facebook/AztlanAthletics  
| WilmingtonChamber

### HASTAGS

#GreenestFastestMileWi  
lminton/  
#BobSeamanDreamMile